

Fashion Personality Questionnaire

Circle the letter that corresponds to your answer, count the answers for each letter and email your answer to bonnie@polishedprofessionalimage.com

You want others to see you as:

- A. Gracious, refine, well-mannered
- B. Friendly, informal, perky
- C. Sophisticated, self-assured, exciting
- D. Soft, feminine, charming

Which statement best describes your | taste in clothes?

- A. Tailored, understated elegance
- B. Simple, casual, comfortable
- C. High-fashion, creative
- D. Soft, sensual, graceful

Which best describes your make-up look?

- A. Subtle and sophisticated; clear colors and polished application
- B. Minimal or no make-up, natural healthy glow
- C. Bold using the newest colors and application
- D. Delicate, using pastels and frosted shades

Which clothing shapes do you prefer?

- A. Tailored, symmetrical, sleek
- B. Simple, easy, sporty lines
- C. Bold, asymmetrical, angular
- D. Soft and flowing

Your idea of a great evening out is:

- A. A symphony concert
- B. A barbeque with friends
- C. Cirque de Soleil or clubbing with friends
- D. A candlelight dinner for two

If you were taking dancing lessons, they would be:

- A. Ballroom
- B. Country line dancing/HipHop
- C. Jazz
- D. Ballet

Which group of women do you identify with in terms of fashion?

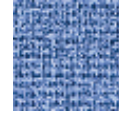
- A. Hillary Clinton, Condoleezza Rice, Diane Sawyer
- B. Jessica Lange, Oprah Winfrey, Sarah Jessica Parker
- C. Beyonce Knowles, Cher
- D. Debra Messing, Halle Berry, Charlize Theron

Besides solids, which patterns and textures dominate your wardrobe?

- A. Tailored stripes and plaid, paisleys



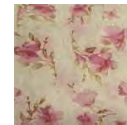
- B. Tweeds, corduroys, herringbones



- C. Bold geometrics and splashy florals



- D. Soft florals and laces



Assuming your hair would cooperate, which hairstyle would you wear?

- A. Neat, smooth & simple



- B. Short and tousled



- C. Sleek and asymmetrical



- D. Softly curled and feathered



You would most likely accessorize your hair with:

A. Sleek combs or a Chanel bow



B. Simple headband or ponytail clip



C. A stunning hat



D. Lace bow or flowers



Which shoe would you select with casual clothes?

A. Spectator pumps



B. Loafers



C. Low-heeled boots



D. Ballet flats



With dressier clothes you probably wear:

A. Plain or spectator mid-heel pumps



B. Low-heel pumps



C. Multicolor high heels



D. Bow-trimmed flats



Which statement describes your accessories?

A. Status-look silk scarves, skin belts, tailored bag



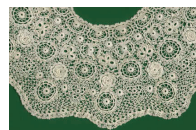
B. Simple, comfortable cotton scarves, low-heeled shoes, shoulder bag



C. Attention-getting shawls, high heels, statement purses



D. Lace collars, soft sash belts, silk flowers



Your favorite everyday purse is:

A. Designer Satchel



B. Soft leather shoulder bag



C. Multi-textured envelope

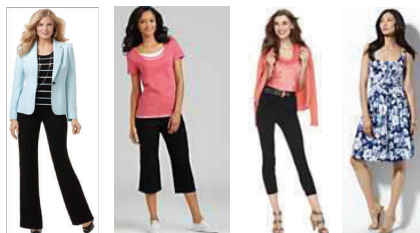


D. Dainty clutch



Which outfit would you feel most comfortable wearing...

For a casual Saturday outing?



A. B. C. D.

For a luncheon?



A. B. C. D.

For a special party?



A. B. C. D.

For a business meeting?



A. B. C. D.

TOTALS:

A. _____ B. _____

C. _____ D. _____